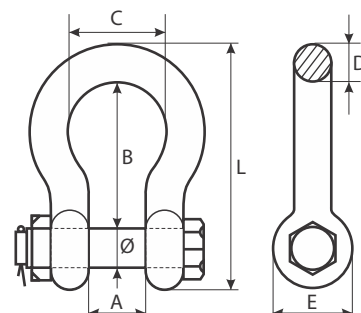


FIȘĂ PRODUS - PRO-CT.03 CHEIE TACHELAJ OMEGA (ANCORĂ) CU PIULIȚĂ ȘI SIGURANȚĂ

Fabricate conform standardului EN 13889 (WLL < 25 tone).

Model/ Caracteristici	WLL (t)	MBL (t)	Dimensiuni (mm)							Greutate netă (kg)
			A	B	C	D	E	L	Ø	
PRO-CT.03.00.33	0.33	1.98	9.3	27.8	14.9	5	13.6	37.8	6	0.03
PRO-CT.03.00.50	0.5	3	11.7	28.5	19.5	6.3	15	46	7.5	0.05
PRO-CT.03.00.75	0.75	4.5	14	30	21	8	21.8	53.5	9.7	0.09
PRO-CT.03.01.00	1	6	17	36	25.8	11	25.3	64	11	0.16
PRO-CT.03.01.50	1.5	9	20	43	29	11	26	73	13.3	0.2
PRO-CT.03.02.00	2	12	21	47.5	32.5	13	29	81.5	15.4	0.33
PRO-CT.03.03.25	3.25	19.5	27	59	42	16	37	104	19	0.68
PRO-CT.03.04.75	4.75	28.5	32	71	49	20	45	124	21	1.09
PRO-CT.03.06.50	6.5	39	36	85.5	56	22.5	52	145	24	1.7
PRO-CT.03.08.50	8.5	51	42	94	65	26	59	165	27	2.37
PRO-CT.03.09.50	9.5	57	46	109	72.5	30	67	185	30	3.41
PRO-CT.03.12.00	12	72	49	120	81	33.5	75	205	36	4.71
PRO-CT.03.13.50	13.5	81	56	135	89	35	82	235	40	6.98
PRO-CT.03.17.00	17	102	60	145	100	41.5	90	250	40	9
PRO-CT.03.25.00	25	150	75	180	127	48	107	310	48	15
PRO-CT.03.35.00	35	210	82	195	145	52	122	345	56	23.7
PRO-CT.03.55.00	55	330	110	255	185	62	147	435	70	37.5
PRO-CT.03.85.00	85	510	126	300	199	76	160	523	78	60
PRO-CT.03.120.0	120	720	136	370	223	97	204	635	97	109
PRO-CT.03.150.0	150	900	144	380	255	100	236	655	107	149



IMPORTANT: Piulița și siguranța măresc nivelul de securitate în exploatare!

